

TECHNICAL DETAILS:

Quantity:	Face Value	10 Lepta	pieces	7,000,000
»	»	20	»	» 10,000,000
»	»	30	»	» 15,000,000
»	»	50	»	» 15,000,000
»	»	70	»	» 5,000,000
»	»	1.00	drachma	» 18,000,000
»	»	1.50	drachmae	» 4,000,000
»	»	2.00	»	» 50,000,000
»	»	3.00	»	» 4,000,000
»	»	3.50	»	» 5,000,000
»	»	4.00	»	» 5,000,000
»	»	5.00	»	» 10,000,000
»	»	7.50	»	» 1,000,000
»	»	10.00	»	» 1,000,000

Size of picture: 23 by 33.5 mm.

Size of stamp: 26 by 36.5 mm.

Method of Printing: Direct Plate Process

Rate of Exchange: 1 U.S. Dollar = 29.90 drachmae

Designs: By the Greek Painter and Engraver A. Tassos

Printed by: Aspioti-Elka Graphic Arts Co., Ltd., Athens



POSTES HELLÉNIQUES
HELLENIC POST OFFICE

SÉRIE
DES ROIS ET REINES DES HELLÈNES
SET OF GREEK KINGS AND QUEENS

LA SÉRIE SERA MISE EN VENTE DANS LE COURANT DU MOIS D'
AVRIL 1956 ET RESTERA EN CIRCULATION JUSQU' A SON ÉPUISEMENT.

THE SET WILL BE PUT INTO CIRCULATION IN APRIL 1956
AND WILL BE ON SALE UNTIL EXHAUSTED.



H.M. KING PAUL



H.M. QUEEN FREDERICA



H.M. KING PAUL



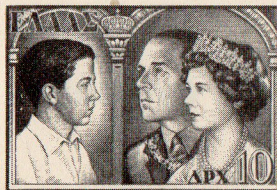
H.R.H. CROWN PRINCE CONSTANTINE



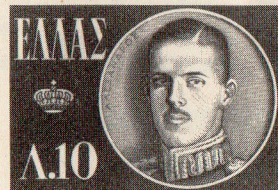
KING GEORGE II



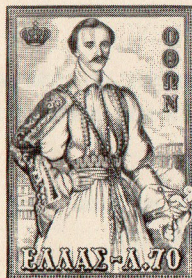
THEIR MAJESTIES
KING PAUL AND
QUEEN FREDERICA



THEIR MAJESTIES THE
KING AND QUEEN AND
H.R.H. THE CROWN PRINCE



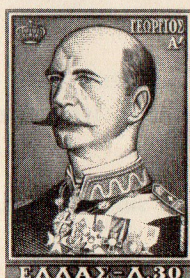
KING ALEXANDER



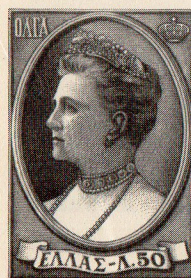
KING OTTO



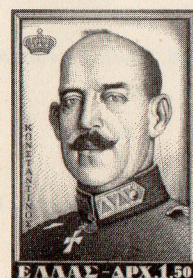
QUEEN AMALIA



KING GEORGE I



QUEEN OLGA



KING CONSTANTINE



QUEEN SOPHIA